

Name \_\_\_\_\_

## ENTOMOLOGY TEST

**Multiple Choice:** Pick the letter of the answer that correctly corresponds with the question. (2 points each)

*The following characteristics belong to which bug...*

1. Two Pair of Wings, Wings are covered with minute scales, and mouth parts are a coiled tube.

- a. Housefly
- b. Butterfly
- c. Mosquito
- d. Cicada

2. Abdomen with neither styles nor tails, Abdomen with a forked tail-like jumping mechanism.

- a. Walking Stick
- b. Springtails
- c. Fleas
- d. Scorpionfly

3. All of the following have front wings with veins EXCEPT.

- a. Carrion Beetle
- b. Ladybug
- c. Weevil
- d. Walking Stick

4. Wings long and fringed with hair, Most species pass unnoticed, and some beneficial (TIE BREAKER)

- a. Thrip
- b. Termites
- c. Assassin Bug
- d. Aphid

**Identification:** Identify the following with its appropriate order (example if the picture resembles a dragon fly: Libellulidae) (3 points each)



Order: \_\_\_\_\_



Order: \_\_\_\_\_



Order: \_\_\_\_\_



Credit: Burrows et al, *BMC Biology* 2008

Order: \_\_\_\_\_



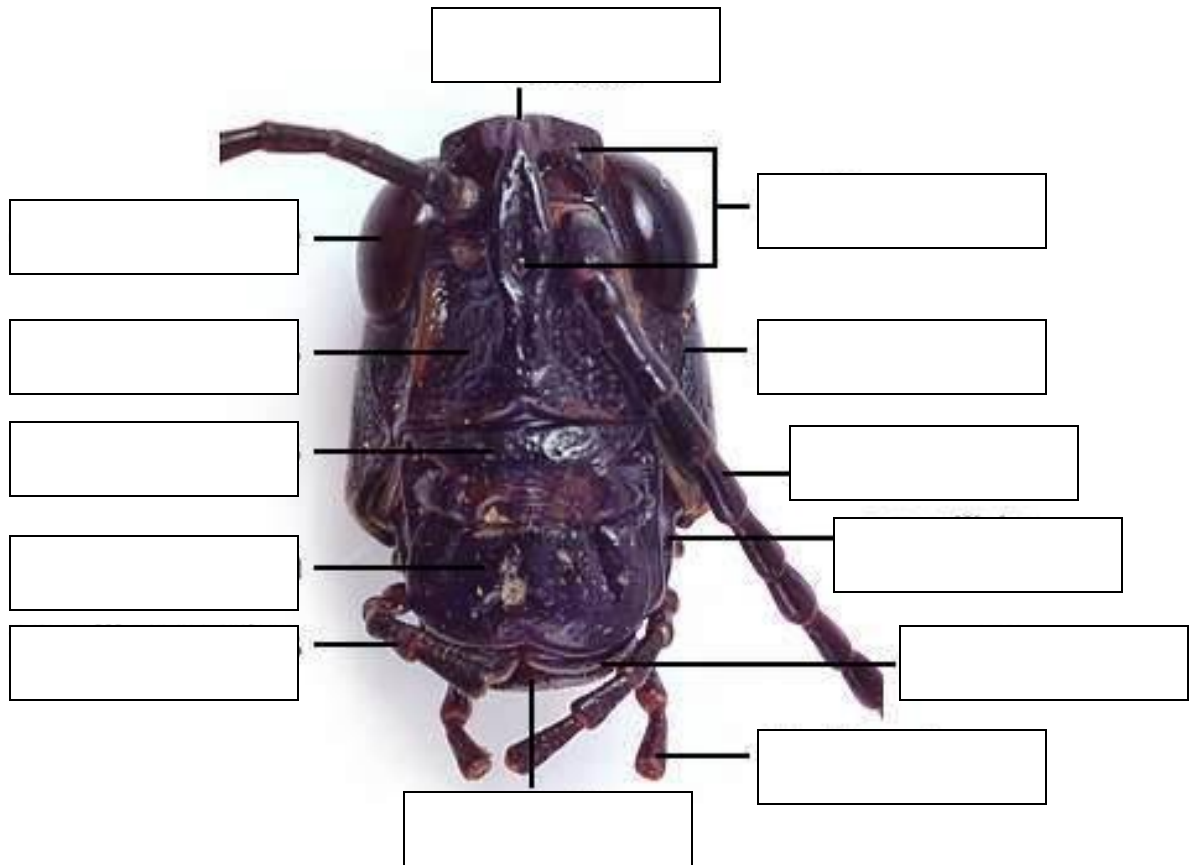
Order: \_\_\_\_\_



Order: \_\_\_\_\_

Labeling: Label e

## Grasshopper - Frontal View of Head



## ENTOMOLOGY ANSWER KEY

### Multiple Choice:

1. B (Butterfly)
2. B (Springtails)
3. D (Walking Stick)
4. A (Thrip)

### Identification:

1. Hymenoptera
2. Coleoptera
3. Coleoptera
4. Hemiptera
5. Diptera
6. Lepidoptera

### Grasshopper - Frontal View of Head

